

ARFI elastography of the omentum: feasibility and diagnostic performance in differentiating benign from malignant omental masses

Amjad Alhyari ^{1,2,3} Christian Görg,^{1,2,3} Christoph Frank Dietrich,⁴ Corrina Trenker,^{1,3,5} Lena Strauch,¹ Ehsan Safai Zadeh^{1,2,3}

To cite: Alhyari A, Görg C, Dietrich CF, *et al.* ARFI elastography of the omentum: feasibility and diagnostic performance in differentiating benign from malignant omental masses. *BMJ Open Gastro* 2022;**9**:e000901. doi:10.1136/bmjgast-2022-000901

Received 20 February 2022
Accepted 18 April 2022

ABSTRACT

Objective To evaluate the feasibility and diagnostic performance of acoustic radiation force impulse (ARFI) elastography in different omental masses (OM).
Design This was a retrospective analysis of 106 patients with OM defined as omental thickness ≥ 1 cm, who underwent abdominal B-mode ultrasound (US) and standardised ARFI examinations of the OM between September 2018 and June 2021 at our university hospital. A cytohistological confirmation was available in 91/106 (85.8%) of all OM, including all 65/65 (100%) malignant OM (mOM) and 26/41 (63.4%) of benign OM (bOM). In 15/41 (36.6%) of bOM; cross-sectional imaging and/or US follow-up with a mean duration of 19.8 ± 3.1 months was performed. To examine the mean ARFI velocities (MAV) for potential cut-off values between bOM and mOM a receiver operating characteristic analysis was implemented.
Results The MAV in the mOM group (2.71 ± 1.04 m/s) was significantly higher than that of bOM group (1.27 ± 0.87 m/s) ($p < 0.001$). Using 1.97 m/s as a cut-off yielded a sensitivity and specificity of 76.9% and 85.4%, respectively, in diagnosing mOM (area under the curve = 0.851, 95% CI = 0.774 to 0.928).
Conclusion ARFI elastography is feasible in the omentum and may represent a good non-invasive additional tool in differentiating bOM from mOM.

INTRODUCTION

The greater omentum is formed by a double layer of the peritoneum extending from the greater curvature of the stomach and passing anterior to the small intestine before folding back on itself to insert upwards into the transverse colon, it consists of 4 layers and is also known as the gastrocolic ligament.¹⁻³ Galen (128–199 AD) already knew the omentum and believed that it served to keep the bowel warm.⁴

This apron-like or shield-like structure serves as a boundary to contain intra-abdominal disease processes but also can be

Significance of this study

What is already known on the topic?

- ⇒ Differentiation between benign and malignant omental masses using current imaging modalities is often difficult. In many instances an invasive diagnostic approach (tissue biopsy or even surgical exploration) may be necessary for a definite diagnosis.
- ⇒ Acoustic radiation force impulse (ARFI) elastography is a good non-invasive method in characterising tissue stiffness with established guidelines for application in multiple organs.
- ⇒ There is only one study on the use of strain elastography in the omentum, this former study reported differences in stiffness values between benign and malignant omental lesions, however, no studies regarding feasibility and diagnostic potential of ARFI elastography in the omentum exist.

What this study adds?

- ⇒ ARFI elastography is feasible in quantifying tissue stiffness in different omental masses with significant differences in mean ARFI velocities between benign and malignant aetiologies.

How might this study affect research, practice or policy?

- ⇒ ARFI elastography may represent a non-invasive and radiation-free adjunctive tool in characterising omental masses.

a potential conduit for the spread of different pathologies.² The omentum can store a large amount of fat³ and is also rich in lymphatic tissue and white blood cells enabling this structure which is also known as the ‘policeman of the abdomen’ to function as an immunological organ.³ In fact, the omental volume can increase dramatically in the presence of inflammation or foreign bodies due to the large number of cells having immunomodulatory and stem cell features, a process known as omental activation.³



© Author(s) (or their employer(s)) 2022. Re-use permitted under CC BY-NC. No commercial re-use. See rights and permissions. Published by BMJ.

For numbered affiliations see end of article.

Correspondence to

Dr Amjad Alhyari;
amjadalhyari@gmail.com

The differential diagnosis of omental masses (OM) includes several benign and malignant pathologies like infectious or tuberculous peritonitis, peritoneal carcinomatosis, mesothelioma, lymphomatosis, pseudomyxoma peritonei, omental infarction, haematoma, foreign body granuloma and hernia.^{1,2} The diagnosis is often difficult due to nonspecific clinical and radiologic features.¹

Usually the ultrasound (US) visualisation of a normal thin omentum is difficult,⁵ however it represents a cost-effective and radiation-free method in the evaluation of ascites and omental pathologies.⁶⁻⁹ It can also be used to guide biopsy of OM.^{10,11}

US elastography is a non-invasive imaging technique for the assessment of tissue stiffness with current established guidelines for hepatic and non-hepatic applications.¹²⁻¹⁵ Acoustic radiation force impulse (ARFI) is a type of point shear wave elastography (pSWE) which depends on the differences of acoustic wave propagation velocity in different tissues determined by measuring the degree of displacement within a 0.5–1.0 cm box on the US screen, known as ‘region of interest’ (ROI).¹⁶

In 2019, the European Federation for Ultrasound in Medicine and Biology published guidelines on the use of elastography in non-hepatic organs.¹³ However, due to insufficient scientific evidence, guidance on elastography in omental pathologies is currently unavailable. To the best of our knowledge, only one study evaluated the use of strain elastography in omental thickening, and our study is the first to evaluate the use of ARFI elastography as a potential quantitative non-invasive tool in characterising OM based on differences in tissue elasticity.

PATIENTS AND METHODS

This was a retrospective study of 123 consecutive patients with OM between October 2018 and June 2021 who underwent an abdominal US of the omentum with elastographic evaluation using ARFI technology at our

tertiary healthcare facility (university hospital). Informed consent was obtained from each patient for the US examination. The inclusion criteria were 1. OM defined as thickness of ≥ 1 cm in diameter on B-mode US; 2. Valid ARFI measurements; and 3. Confirmation of the diagnosis by cytological/histological examination or clinical follow-up. In total, 17/123 (13.8%) of the patients were excluded due to the absence of diagnostic confirmation, so finally 106 patients were included in the study (figure 1).

The indications for sonographic evaluation of the omentum were: omental abnormality initially detected on CT/MRI in 31.1% (33/106) or ascites of unknown cause in 31.1% (33/106), and in 37.8% (40/106) of the patients the OM was an incidental finding on sonographic examination performed for other indications.

US examinations

All US and ARFI elastographic examinations were performed using Siemens Acuson S2000, Acuson S3000 and Acuson Sequoia (Siemens Medical Solutions, Erlangen, Germany) by two independent, qualified investigators (ESZ, AA) under the supervision and active participation of a German Society for Ultrasound in Medicine (DEGUM) Level III qualified examiner (CG, internal medicine) with more than 35 years of US experience.¹⁷ With the patient laying supine, the curvilinear transducer (6C1) was placed gently on an area of the abdomen where the OM was optimally visualised. Focus and gain were adjusted as needed. The echogenicity of the lesion was classified as hypoechoic or isoechoic/hyperechoic compared with that of the spleen as an *in vivo* reference. Both echogenicity, and thickness of the of the OM (largest diameter in cm), as well as the presence of ascites were evaluated on B-mode US.

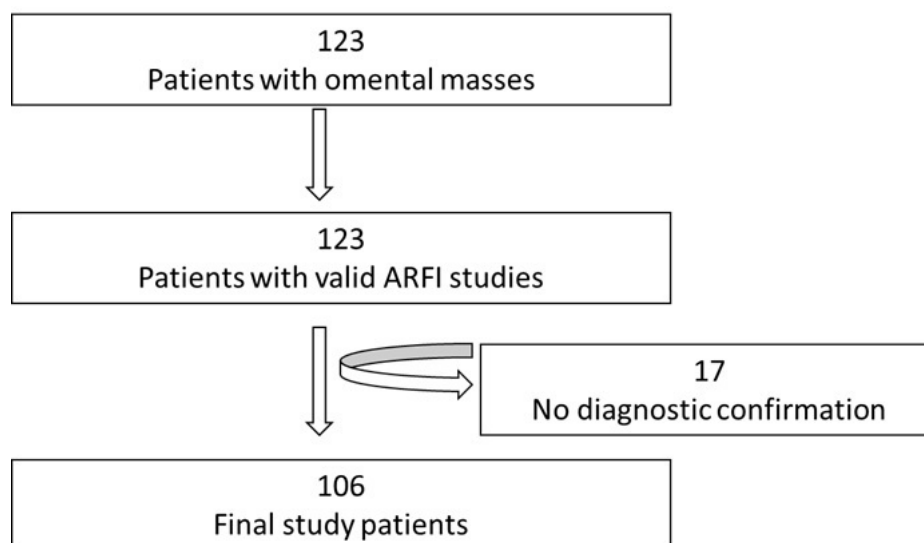


Figure 1 Flow diagram of the study patients. ARFI, acoustic radiation force impulse.

Table 1 Baseline characteristics and final diagnoses in 106 study patients

Group	Benign OM (n=41)	Malignant OM (n=65)	
Age (years)	60±17	64±14	
Male/female	21/20	22/43	
BMI (kg/m ²)	26.3±4.7	25.7±4.3	
Ascites	28/41 (68%)	54/65 (83%)	
Subgroup	Benign inflammatory OM (n=19)	Benign non-inflammatory OM (n=22)	
Aetiology	Pancreatitis (10) Crohn's disease (2) Peritoneal dialysis (1) Acute kidney-graft rejection (1) Hypereosinophilic syndrome (1) Bacterial peritonitis due to bowel perforation (2) Unspecific chronic fibroinflammation (1) Inflammatory pseudotumour (1)	Portal hypertension (9) Congestive heart failure (4) Omental fat-bulk (n=7) Omental infarction (1) AS/splenosis (1)	Ovarian CA (12) Breast CA (8) CRC (6) Pancreas CA (6) Gastric Ca (5) CUP (6) B-cell-lymphoma (5) Biliary CA (4) Appendix CA (2) Prostate CA (2) Cervix CA (2) Oesophagus CA (1) Vulva CA (1) Malignant melanoma (1) Bladder CA (1) Mesenchymal sarcoma (1) Leiomyosarcoma (1) Primary serous peritoneal adenocarcinoma (1)

AS, accessory spleen; BMI, body mass index; CA, carcinoma; CRC, colorectal carcinoma; CUP, cancer of unknown primary; OM, omental mass.;

ARFI examinations

The transducer was placed gently on the abdomen, and the depth was adjusted, bringing the OM to the centre of the screen. The ROI (dimensions=10×5 mm) was placed within the mass. For each measurement, the patient was asked to hold their breath in mid-expiration for at least 6 seconds. The measurement was displayed as velocity (m/s) on the upper corner of the screen. If the lesion moved while being measured, this single reading “shot” was considered invalid and was repeated. A total of 11 valid measurements were obtained for each ARFI study.^{14 15 18} ARFI study was considered valid only if the success rate to obtain 11 measurements was >60%. The mean ARFI velocities (MAV) were registered.

Final diagnosis of OM

Of all OM 65/106 (61.3%) were malignant OM (mOM) and 41/106 (38.7%) were benign OM (bOM). An overview of all disease entities of OM is shown in [table 1](#).

Cytohistological confirmation was available in 91/106 (85.8%) of all OM, this included all the 65/65 (100%) patients with the final diagnosis of mOM, in whom cytohistological specimens were obtained using trans-abdominal US-guided biopsy (48/65; 73.8%), surgery (12/65;18.4%) or paracentesis with positive cytology

of the ascitic fluid regarding evidence of tumour cells (5/65; 7.7%).

In 26/41 (63.4%) patients with the final diagnosis of bOM US-guided biopsies were performed. In 15/41 (36.6%), the diagnosis of bOM was based on cross-sectional imaging and or US follow-up. The mean duration of follow-up was 19.8±3.1 months. All the 91 specimens were examined by 2 pathologists with experience in gastrointestinal pathologies at a university hospital. There were no recorded complications related to tissue sampling procedures.

Cross-sectional reference imaging was available in 92/106 (86.8%) of all OM.

Statistical analysis

All statistical analyses were performed using Excel (Microsoft 365 MSO; Microsoft, Redmond, WA, USA) and SPSS V.26.0 statistical software (IBM). Demographic and biometric data were expressed as mean values±SD. Statistical evaluation was performed using a Fisher's exact test for categorical variables and a Mann-Whitney test for continuous variables. The diagnostic performance was assessed using receiver operating characteristics (ROC) curves. Cut-offs between groups were

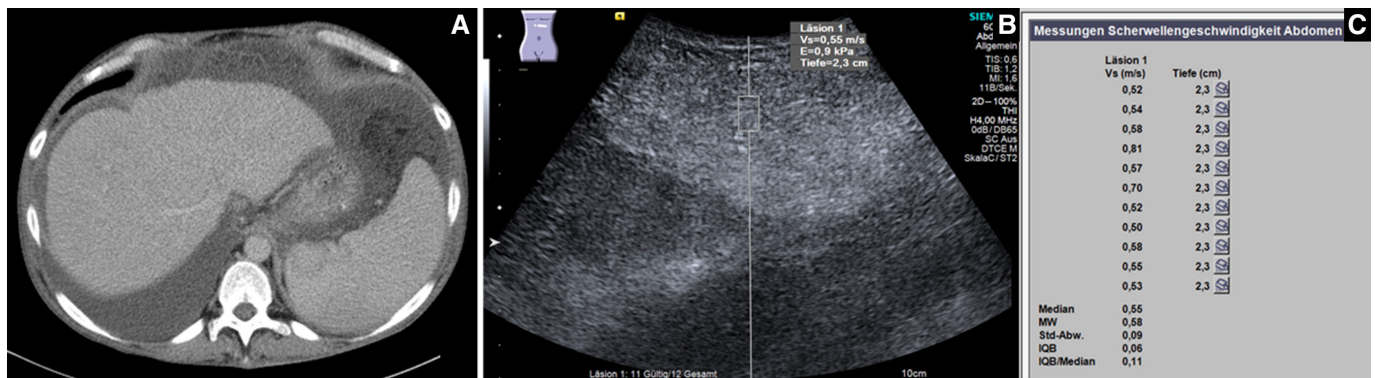


Figure 2 Benign omental mass. A 41-year-old male patient with unexplained ascites; (A) CT scan showing ascites and thickened omentum (courtesy of Professor Dr Mahnken, Department of Radiology, University Hospital Marburg), (B) US elastography image showing a mass-like echogenic omentum in the epigastric area with one ARFI measurement of 0.55 m/s, (C) the final ARFI report of the same mass showing a mean ARFI velocity (MW) of 0.58 m/s. After surgical exploration, the diagnosis of bacterial peritonitis as a delayed presentation of a perforated subacute appendicitis was established and histologically confirmed. ARFI, acoustic radiation force impulse; US, ultrasound.

examined for accuracy using the area under the ROC curve (AUROC) and the 95% CI. A $p < 0.05$ was defined as significant.

RESULTS

Demographics

Of the 106 study patients 43 (40.6%) were males and 63 (59.4%) females. The mean age was 62.1 ± 15.0 years (range 18–87 years). The mean body mass index (BMI) was $26.0 \pm 4.5 \text{ kg/m}^2$ (range: 16.9–44.8 kg/m^2). No significant associations were found between gender, age or BMI and malignancy risk ($p > 0.05$).

US data

Ascites was present in 82/106 (77.4%) patients; in 54/65 (83.1%) patients with mOM and in 28/41 (68.3%) patients with bOM ($p = 0.1$). The mean size of the mOM ($2.93 \pm 1.25 \text{ cm}$) and that of the bOM ($2.48 \pm 0.77 \text{ cm}$) did not differ significantly ($p = 0.07$). Regarding echogenicity, 57/106 (53.8%) OM were isoechoic and 49/106

(46.2%) hypoechoic. MOM were more likely to be hypoechoic (44/65; 67.7%) than bOM (5/41; 12.2%) ($p < 0.001$).

ARFI data

MOM demonstrated significantly higher MAV than bOM (2.71 ± 1.04 vs $1.27 \pm 0.87 \text{ m/s}$) ($p < 0.001$) (figures 2 and 3). Using 1.97 m/s as a cut-off would have a sensitivity and specificity of 76.9% and 85.4%, respectively in diagnosing mOM (AUC 0.851, 95% CI 0.774 to 0.928). There were no significant differences in MAV between 19 inflammatory bOM ($1.46 \pm 0.90 \text{ m/s}$) and 22 non-inflammatory bOM ($1.11 \pm 0.84 \text{ m/s}$) ($p = 0.23$). There were also no significant differences in the MAV of 24 OM without ascites ($2.18 \pm 1.20 \text{ m/s}$) and that of 82 OM with ascites ($2.15 \pm 1.21 \text{ m/s}$) ($p = 0.82$). A boxplot comparing ARFI values among bOM and mOM is shown in figure 4. The MAV of different benign and malignant subgroups are shown in table 2.

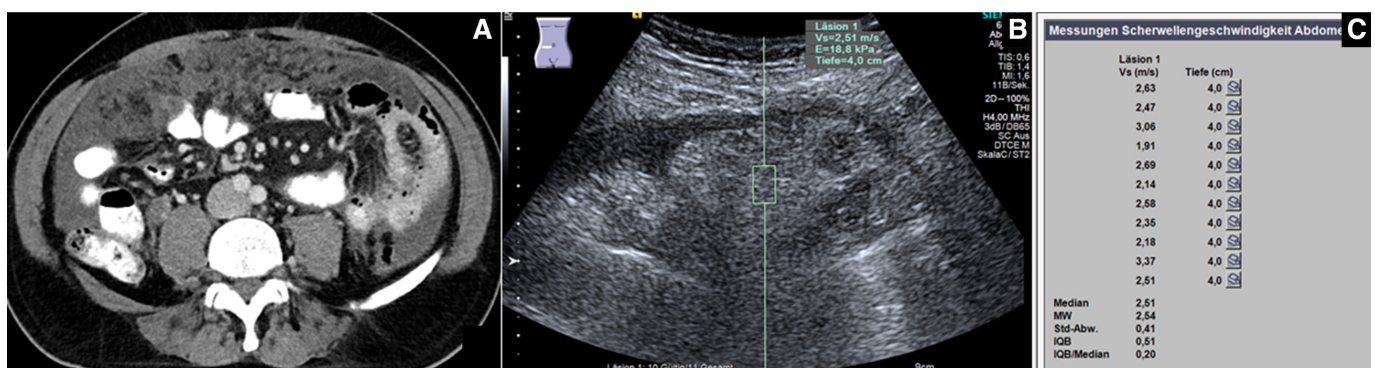


Figure 3 Malignant omental mass. A 51-year-old male patient with unexplained ascites; (A) CT scan showing ascites and inhomogeneous omental mass with multiple nodules (omental caking) (courtesy of Professor Dr Mahnken, Department of Radiology, University Hospital Marburg), (B) US elastography image showing an inhomogeneous multinodular OM in the left lower quadrant with one ARFI measurement of 2.51 m/s, (C) the final ARFI report of the same mass showing a mean ARFI velocity (MW) of 2.54 m/s. The final histology of the US-guided omental biopsy as well as that of the surgical specimens was diffuse omental and peritoneal metastases from an appendiceal carcinoma. ARFI, acoustic radiation force impulse; OM, omental masses; US, ultrasound.

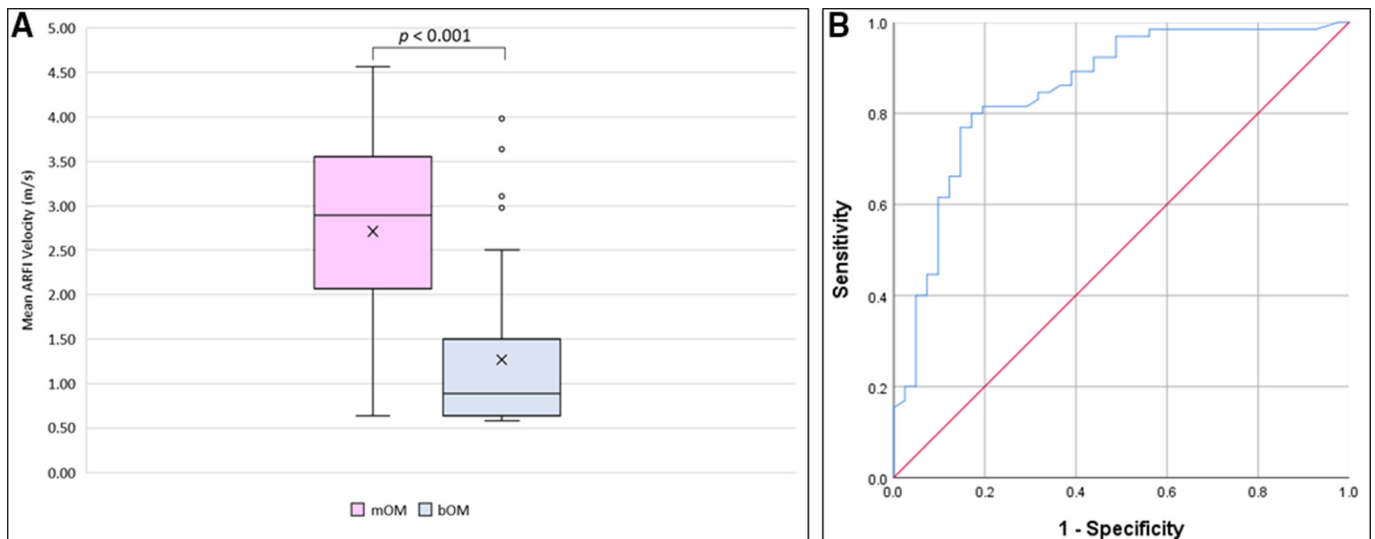


Figure 4 (A) Differences of mean ARFI velocities between benign and malignant omental masses (mOM) in the study. The mean ARFI velocity (MAV) in m/s is represented with an 'X' in each box, and the median ARFI velocity of each group is shown as a horizontal line within each box. (B) Receiver operator characteristic curve for the differences in mean ARFI velocities between benign and malignant omental masses. ARFI, acoustic radiation force impulse; bOM, benign OM.

DISCUSSION

The omentum is a complex peritoneal fold which functions as an organ. Despite the classical notion of the omentum being merely a 'fat reservoir', our understanding of its various immunological and regenerative roles and their clinical applications is evolving.³ There are many benign and malignant diseases which can affect the omentum and the differentiation between such diseases is often difficult.^{1 7 19 20} In terms of omental imaging, CT scan represents the classical diagnostic modality in omental diseases, however differentiating benign from malignant omental involvement is challenging and the CT signs of fat stranding, nodularity, large masses and omental caking lack specificity.¹ Apart from the cost (CT and MRI), radiation exposure (CT) and motion artefacts (MRI) the ability of both imaging modalities in distinguishing postoperative scar tissue from nodular tumour involvement is limited.²¹

As a cost effective and radiation free method US is a good tool in evaluating ascites and peritoneal carcinomatosis.²² Moreover, US-guided omental biopsy is a safe

and effective method in evaluating OM and the cause of ascites.^{8 10} Salman *et al* performed US examinations on 100 patients with ascites of unknown aetiology and suggested an omental thickness of ≥ 19.5 mm to be a predictor of malignancy.⁶ The size alone was not shown to be specific for malignancy in other studies.^{7 8} Similarly, in our study there were no significant differences in the mean sizes of mOM and bOM ($p=0.07$). In one study Trenker *et al* concluded that the grey scale and contrast enhanced US were not able to differentiate benign from malignant omental lesions.⁸ In our study, the presence of ascites did not vary significantly among mOM and bOM ($p=0.1$). However, mOM were more likely to appear hypochoic (44/65; 67.7%) in comparison to bOM (5/41; 12.2%) ($p<0.001$).

Previous studies on colour Doppler US could not demonstrate significant differences in the flow patterns between bOM and mOM.^{9 19}

US elastography represents a good non-invasive method in characterising tissue stiffness with various applications in multiple organs,¹³ however, little is known

Table 2 Comparison of acoustic radiation force impulse (ARFI) data in different bOM and mOM in 106 study patients

Subgroup	No of lesions (n)	Mean ARFI velocity (m/s)			Average depth of measurement (mean \pm SD in cm)
		Mean \pm SD	Minimum	Maximum	
bOM	41	1.27 \pm 0.87	0.58	3.98	3.14 \pm 0.70
Non-inflammatory bOM	22	1.11 \pm 0.84	0.61	3.98	3.22 \pm 0.71
Inflammatory bOM	19	1.46 \pm 0.90	0.58	3.64	3.04 \pm 0.70
mOM	65	2.71 \pm 1.04	0.64	4.57	3.12 \pm 0.84
Non-haematological	60	2.79 \pm 1.00	0.64	4.57	3.11 \pm 0.85
Haematological	5	1.80 \pm 1.21	0.80	3.69	3.18 \pm 0.87

bOM, benign omental masses; mOM, malignant omental masses.;



about its feasibility and diagnostic performance in omental pathologies with only one study evaluating the use of strain elastography in omental diseases.⁵ In this study, an elasticity strain ratio of 2.6 (using abdominal wall fat as a reference) was proposed as a cut-off between benign and malignant omental lesions with a sensitivity and specificity of 80.3% and 76.6%, respectively.⁵ Among the limitations of the above-mentioned study were the subjective nature of strain elastography with unavoidable intra- and interobserver variability and semiquantitative assessments of stiffness.^{23 24} In comparison, ARFI elastography is a quantitative method of tissue elasticity and various studies demonstrated its excellent intraobserver and interobserver reproducibility in different body organs^{25 26} as well as its feasibility and validity in patients with ascites.²⁷ Indeed, in this study we did not find significant differences in the MAV of 24 OM without ascites (2.18±1.20 m/s) and that of 82 OM with ascites (2.15±1.21 m/s) (p=0.82) suggesting that the presence of ascites did not influence the ARFI measurements in this study, this was also seen in the liver where several studies reported no significant differences of ARFI measurements in the presence of ascites.^{28–30}

In this study, the MAV in mOM was 2.71 m/s with an SD of 1.04 m/s and in the bOM 1.27 m/s with an SD of 0.87 m/s. This difference between bOM and mOM was statistically significant (p<0.001). Using the AUROC and aiming at maximising sensitivity and specificity we suggest a value of 1.97 m/s as a cut-off for mOM (AUC 0.851, 95% CI 0.774 to 0.928), the calculated sensitivity, specificity, positive predictive value and negative predictive value were 76.9%, 85.4%, 89.3% and 70.0%, respectively. This could be a good non-invasive test with moderate sensitivity and specificity in supporting the final diagnosis of

OM. Table 3 summarises the reported diagnostic performances of different diagnostic imaging techniques in differentiating bOM and mOM.

The differences of the MAV between 19 inflammatory bOM (1.46±0.90 m/s) and 22 non-inflammatory bOM (1.11±0.84 m/s) were not statistically significant (p=0.23). Some inflammatory bOM in the study demonstrated higher stiffness measurements (MAV >1.97 m/s), this may be due to enzymatic-related fat necrosis (eg, pancreatitis with peritoneal inflammation) with tissue hardening in the form of saponification which can mimic the appearance of malignancy on imaging,^{31 32} or due to the presence of variable degree of omental scarring and fibrosis, such findings are similar to those encountered during liver elastography in patients with liver fibrosis/cirrhosis¹⁶ and those of certain necro-inflammatory lung consolidations.¹⁴

On the other hand, low stiffness values (MAV <1.97 m/s) were encountered in some mOM and we think this may reflect the heterogeneous geometrical construction of such tumours.

There are some limitations to this study: First: there are still no validated reference ARFI values for normal omentum. Second: there was no analysis of the intraobserver or interobserver variability, however, various studies demonstrated the reproducibility of ARFI in different body organs.^{25 26} Third: histological confirmation was not available in 1/3 of bOM and in around 8% of the mOM the diagnosis was based on positive ascitic fluid which indicates but does not certainly prove the malignancy of an OM. Fourth: despite being used as a measure of reliability in other organs, the use of the IQR and IQR/median ratio as measures of reliability is not validated in the omentum. Moreover, obtaining an IQR value <60% and

Table 3 Comparison of various imaging modalities regarding their diagnostic performance in differentiating benign and malignant omental masses

Author	N	Imaging modality	Parameter predictor of malignancy	Sensitivity (%)	Specificity (%)	PPV (%)	NPV (%)	P value
Salman <i>et al</i> ⁶	100	B-mode US	omental thickness of ≥19.5	89.3	84.1	87.7	86.0	<0.001
Trenker <i>et al</i> ⁶	44	CEUS	Inhomogeneous enhancement	–	–	–	–	0.05
Inan <i>et al</i> ¹⁹	24	Colour Doppler US	RI	–	–	–	–	0.08
Perez <i>et al</i> ³⁴	163†	CT	Infiltrative morphology	80.5	66.7	97.6	16.7	<0.001
Doshi <i>et al</i> ‡, ³⁵	19	MRI	Hyperintensity on high b-value diffusion-weighted imaging	87.5	100	100	91.7	<0.001
Zhang <i>et al</i> ⁵	118	Strain elastography	Strain ratio§ >2.6	80.3	76.6	83.8	72.0	<0.01
			Elasticity score¶ >3	93.0	93.6	95.7	89.8	<0.01
Present study	106	ARFI-elastography	Mean velocity >1.97 m/s	76.9	85.4	89.3	70.0	<0.001

*This study involved 100 patients with ascites (56 peritoneal carcinomatosis and 44 tuberculous peritonitis).

†This study included 154 malignant and nine benign omental lesions.

‡The study included 11 benign and eight malignant omental lesions.

§Using abdominal wall fat as a reference.

¶Score based on evaluation of colour topography (1: uniformly green, 2: green and blue but predominantly green, 3: blue and green but predominantly blue, 4: uniformly blue).

ARFI, acoustic radiation force impulse; CEUS, contrast enhanced US; NPV, negative predictive value; PPV, positive predictive value; RI, Resistive Index; US, ultrasound.

IQR/median ratio <30% was not possible in all patients with OM. To ensure validity of ARFI studies 11 measurements with a success rate of >60% were obtained for each examination.³³ Fifth: due the retrospective nature of this study, the examiners were not blinded to clinical and radiological data. Thus, further large prospective studies are needed to validate our results.

In conclusion, our understanding of the omental role in health and disease states is continuously evolving. In this study, we demonstrated the feasibility of pSWE using ARFI in quantifying tissue stiffness in different bOM and mOM. We found significant differences in stiffness values between bOM and mOM. ARFI elastography may represent an additional non-invasive diagnostic tool for characterising omental pathologies.

Author affiliations

¹Interdisciplinary Centre of Ultrasound Diagnostics, University Hospital Giessen and Marburg, Philipp University of Marburg, Baldingerstraße Marburg, Marburg, Germany

²Gastroenterology, Endocrinology, Metabolism and Clinical Infectiology, University Hospital Giessen and Marburg, Philipp University of Marburg, Marburg, Germany, Marburg, Germany

³Interdisciplinary Centre of Internal Medicine, University Hospital Giessen and Marburg, Philipp University of Marburg, Baldingerstraße Marburg, Marburg, Germany

⁴Department of Internal Medicine, Kliniken Hirslanden Bern, Salem und Permanence, Bern, Switzerland

⁵Haematology, Oncology and Immunology, Universitätsklinikum Giessen und Marburg - Standort Marburg, Marburg, Germany

Contributors AA, ESZ, CG, CT, CFD and LS performed the research; AA, ESZ and CG designed the research study. AA and ESZ analysed the data. AA, ESZ, CG, CFD and CT wrote the paper. All authors approved the final version of the manuscript. AA is responsible for the overall content as the guarantor.

Funding The authors have not declared a specific grant for this research from any funding agency in the public, commercial or not-for-profit sectors.

Competing interests None declared.

Patient consent for publication Not applicable.

Ethics approval This study involves human participants and was approved by Ethikkommission des Fachbereichs Humanmedizin der Philipps-Universität Marburg Protocol code: EK_MR_09_04_20_görg_1.

Provenance and peer review Not commissioned; externally peer reviewed.

Data availability statement Data are available on reasonable request.

Open access This is an open access article distributed in accordance with the Creative Commons Attribution Non Commercial (CC BY-NC 4.0) license, which permits others to distribute, remix, adapt, build upon this work non-commercially, and license their derivative works on different terms, provided the original work is properly cited, appropriate credit is given, any changes made indicated, and the use is non-commercial. See: <http://creativecommons.org/licenses/by-nc/4.0/>.

ORCID iD

Amjad Alhyari <http://orcid.org/0000-0002-1308-988X>

REFERENCES

- 1 Yoo E, Kim JH, Kim M-J, *et al.* Greater and lesser omenta: normal anatomy and pathologic processes. *Radiographics* 2007;27:707–20.
- 2 Healy JC, Reznick RH. The peritoneum, mesenteries and omenta: normal anatomy and pathologic processes. *Eur Radiol* 1998;8:886–900.
- 3 Di Nicola V. Omentum a powerful biological source in regenerative surgery. *Regen Ther* 2019;11:182–91.
- 4 HS G. *The omentum*. Springer Science & Business Media, 2012.
- 5 Zhang Y, Wang X, Tao C, *et al.* Ultrasound elastography for differentiating benign from malignant thickened greater omentum. *Eur Radiol* 2016;26:2337–43.
- 6 Salman MA, Salman AA, Hamdy A, *et al.* Predictive value of omental thickness on ultrasonography for diagnosis of unexplained ascites, an Egyptian centre study. *Asian J Surg* 2020;43:13–19.
- 7 Chen Z, Sang L, Zhang Y, *et al.* Greater omentum Imaging-Reporting and data system: establishing the grade of benign and malignant lesions of the greater omentum using ultrasonography. *Cancer Imaging* 2020;20:54.
- 8 Trenker C, Dietrich CF, Ziegler E, *et al.* B-mode ultrasound and contrast-enhanced ultrasound (CEUS) of histological confirmed omental lesions: retrospective analysis of n=44 patients. *Z Gastroenterol* 2019;57:945–51.
- 9 Testa AC, Ludovisi M, Savelli L, *et al.* Ultrasound and color power Doppler in the detection of metastatic omentum: a prospective study. *Ultrasound Obstet Gynecol* 2006;27:65–70.
- 10 Que Y, Wang X, Liu Y, *et al.* Ultrasound-guided biopsy of greater omentum: an effective method to trace the origin of unclear ascites. *Eur J Radiol* 2009;70:331–5.
- 11 Sistrom CL, Abbott PL, Feldman PS. Ultrasound guidance for biopsy of omental abnormalities. *J Clin Ultrasound* 1992;20:27–36.
- 12 Dietrich CF, Bamber J, Berzigotti A, *et al.* EFSUMB guidelines and recommendations on the clinical use of liver ultrasound elastography, update 2017 (long version). *Ultraschall Med* 2017;38:e16–47.
- 13 Săftoiu A, Gilja OH, Sidhu PS, *et al.* The EFSUMB guidelines and recommendations for the clinical practice of elastography in non-hepatic applications: update 2018. *Ultraschall Med* 2019;40:425–53.
- 14 Alhyari A, Görg C, Dietrich CF, *et al.* Diagnostic performance of point shear wave elastography using acoustic radiation force impulse technology in peripheral pulmonary consolidations: a feasibility study. *Ultrasound Med Biol* 2022;48:778–85.
- 15 Alhyari A, Görg C, Dietrich CF, *et al.* Diagnostic performance of point shear wave elastography (pSWE) using acoustic radiation force impulse (ARFI) technology in mesenteric masses: a feasibility study. *Diagnostics* 2022;12:523.
- 16 D'Onofrio M, Crosara S, De Robertis R, *et al.* Acoustic radiation force impulse of the liver. *World J Gastroenterol* 2013;19:4841–9.
- 17 Heese F, Görg C. [The value of highest quality ultrasound as a reference for ultrasound diagnosis]. *Ultraschall Med* 2006;27:220–4.
- 18 Barr RG, Ferraioli G, Palmeri ML, *et al.* Elastography assessment of liver fibrosis: Society of radiologists in ultrasound consensus conference statement. *Radiology* 2015;276:845–61.
- 19 Inan N, Arslan A, Akansel G, *et al.* Color Doppler ultrasonographic flow parameters in the differentiation of benign and malignant causes of omental thickening. *J Comput Assist Tomogr* 2008;32:882–5.
- 20 Wasnik AP, Maturen KE, Kaza RK, *et al.* Primary and secondary disease of the peritoneum and mesentery: review of anatomy and imaging features. *Abdom Imaging* 2015;40:626–42.
- 21 Krishnamurthy S, Balasubramaniam R. Role of imaging in peritoneal surface malignancies. *Indian J Surg Oncol* 2016;7:441–52.
- 22 Goerg C, Schwerk WB. Malignant ascites: sonographic signs of peritoneal carcinomatosis. *Eur J Cancer* 1991;27:720–3.
- 23 Cantisani V, Grazhdani H, Drakonaki E. Strain US Elastography for the Characterization of Thyroid Nodules: Advantages and Limitation. *Int J Endocrinol* 2015;2015:908575.
- 24 Sigrist RMS, Liao J, Kaffas AE, *et al.* Ultrasound elastography: review of techniques and clinical applications. *Theranostics* 2017;7:1303–29.
- 25 Bob F, Bota S, Sporea I, *et al.* Kidney shear wave speed values in subjects with and without renal pathology and inter-operator reproducibility of acoustic radiation force impulse elastography (ARFI)—preliminary results. *PLoS One* 2014;9:e113761.
- 26 Balakrishnan M, Souza F, Muñoz C, *et al.* Liver and spleen stiffness measurements by point shear wave elastography via acoustic radiation force impulse: intraobserver and interobserver variability and predictors of variability in a US population. *J Ultrasound Med* 2016;35:2373–80.
- 27 Bota S, Sporea I, Sirlu R, *et al.* Value of acoustic radiation force impulse elastography for the assessment of ascites syndrome. *World J Radiol* 2011;3:205–9.
- 28 Kohlhaas A, Durango E, Seitz HK, *et al.* Ascites does not increase liver stiffness in the absence of liver congestion. *Z Gastroenterol* 2011;49:P5_14.
- 29 Hoie KL, Robert G, Siddharth S. Liver stiffness by ARFI does not correlate with decompensation and portal hypertension in patients with cirrhosis. *Journal of Digestive Disorders and Diagnosis* 2017;1:28–37.



- 30 Bruno C, Minniti S, Bucci A, *et al.* ARFI: from basic principles to clinical applications in diffuse chronic disease—a review. *Insights Imaging* 2016;7:735–46.
- 31 Smith JP, Arnoletti JP, Varadarajulu S, *et al.* Post-pancreatitis fat necrosis mimicking carcinomatosis. *Radiol Case Rep* 2008;3:192.
- 32 Haynes JW, Brewer WH, Walsh JW. Focal fat necrosis presenting as a palpable abdominal mass: CT evaluation. *J Comput Assist Tomogr* 1985;9:568–9.
- 33 Bota S, Sporea I, Sirli R, *et al.* Factors associated with the impossibility to obtain reliable liver stiffness measurements by means of Acoustic Radiation Force Impulse (ARFI) elastography—analysis of a cohort of 1,031 subjects. *Eur J Radiol* 2014;83:268–72.
- 34 Perez AA, Lubner MG, Pickhardt PJ. Ultrasound-Guided omental biopsy: diagnostic yield and association with CT features based on a single-institution 18-year series. *AJR Am J Roentgenol* 2021;217:898–906.
- 35 Doshi AM, Campbell N, Hajdu CH, *et al.* Differentiation of malignant omental caking from benign omental thickening using MRI. *Abdom Imaging* 2015;40:1157–63.