

BMJ Open Effects of a video intervention on physicians' acceptance of pain apps: a randomised controlled trial

Hauke Jeldrik Hein ¹, Julia Anna Glombiewski,² Winfried Rief,¹ Jenny Riecke¹

To cite: Hein HJ, Glombiewski JA, Rief W, *et al.* Effects of a video intervention on physicians' acceptance of pain apps: a randomised controlled trial. *BMJ Open* 2022;**12**:e060020. doi:10.1136/bmjopen-2021-060020

► Prepublication history and additional supplemental material for this paper are available online. To view these files, please visit the journal online (<http://dx.doi.org/10.1136/bmjopen-2021-060020>).

Received 09 December 2021
Accepted 08 April 2022



© Author(s) (or their employer(s)) 2022. Re-use permitted under CC BY-NC. No commercial re-use. See rights and permissions. Published by BMJ.

¹Clinical Psychology and Psychotherapy, Department of Psychology, Philipps-University Marburg, Marburg, Germany

²Pain and Psychotherapy Research Lab, Department of Psychology, University of Koblenz-Landau, Landau, Germany

Correspondence to

Dr Jenny Riecke;
jenny.riecke@staff.uni-marburg.de

ABSTRACT

Objectives The aim of our study was to determine and enhance physicians' acceptance, performance expectancy and credibility of health apps for chronic pain patients. We further investigated predictors of acceptance.

Design Randomised experimental trial with a parallel-group repeated measures design.

Setting and participants 248 physicians working in various, mainly outpatient settings in Germany.

Intervention and outcome Physicians were randomly assigned to either an experimental group (short video about health apps) or a control group (short video about chronic pain). Primary outcome measure was acceptance. Performance expectancy and credibility of health apps were secondary outcomes. In addition, we assessed 101 medical students to evaluate the effectiveness of the video intervention in young professionals.

Results In general, physicians' acceptance of health apps for chronic pain patients was moderate ($M=9.51$, $SD=3.53$, scale ranges from 3 to 15). All primary and secondary outcomes were enhanced by the video intervention: A repeated-measures analysis of variance yielded a significant interaction effect for acceptance ($F(1, 246)=15.28$, $p=0.01$), performance expectancy ($F(1, 246)=6.10$, $p=0.01$) and credibility ($F(1, 246)=25.61$, $p<0.001$). The same pattern of results was evident among medical students. Linear regression analysis revealed credibility ($\beta=0.34$, $p<0.001$) and performance expectancy ($\beta=0.30$, $p<0.001$) as the two strongest factors influencing acceptance, followed by scepticism ($\beta=-0.18$, $p<0.001$) and intuitive appeal ($\beta=0.11$, $p=0.03$).

Conclusions and recommendations Physicians' acceptance of health apps was moderate, and was strengthened by a 3 min video. Besides performance expectancy, credibility seems to be a promising factor associated with acceptance. Future research should focus on ways to implement acceptability-increasing interventions into routine care.

INTRODUCTION

Since the Global Burden of Disease Study was first conducted in the 1990s, chronic pain has been identified as the leading cause of years lived with disability.¹ Chronic pain has various negative health consequences and adverse impacts on quality of life.²⁻⁴ Although there are effective treatments for chronic pain,^{5,6} effect sizes tend to be small.⁷ Further,

Strengths and limitations of this study

- This is the first study to examine physicians' acceptance and expectations about health apps for chronic pain.
- A strength of the study is the investigation of both practitioners and medical students as future physicians.
- The study has a strong active control group.
- A limitation is the online-only data collection, due to which a selection bias may have occurred.

the sustained efficacy of treatments is uncertain.⁸ This is problematic, because chronic pain raises costs dramatically for healthcare systems^{9,10} and is a significant contributor to work disability.¹¹ The likelihood of returning to work correlates with the duration of pain: the longer patients are out of work, the less likely they are to return to full-time employment.^{12,13} Therefore, the principle for treating pain is that it should start as early as possible. However, many people, especially in rural areas, have no access to adequate pain treatment,^{14,15} even though it is considered a human right.¹⁶

eHealth offerings can help to alleviate these problems and provide patients with evidence-based interventions.¹⁷ Smartphone apps, falling under the mHealth category, especially have great potential for both practitioners and patients.¹⁸ First, because of the widespread use of smartphones, they can reach patients with chronic pain at a low threshold.¹⁹ Second, they can help patients better manage their pain, for example as a treatment adjunct or in the absence of a pain expert.²⁰⁻²² Pain apps offer a wide range of application possibilities ranging from diary functions for monitoring pain to specific interventions. Two recent meta-analyses concluded that pain apps can reduce patients' pain by a small effect²³ and have a small positive effect on depression and short-term pain catastrophising.²⁴ However, despite their

positive potential, it should be mentioned that most pain apps have not been scientifically evaluated yet and privacy protection is often not sufficiently guaranteed.²⁵ Besides these problems, there are various other barriers to the implementation of health apps into clinical practice.

One barrier on the practitioners' side is that they play a gatekeeping role in electronic treatment forms.²⁶ Even if physicians consider health apps to be helpful,²⁷ integrating health apps into their daily work is slow.²⁸ Although many patients are eager to try health apps²⁹ health professionals recommend them seldom.^{30 31} One potential reason for this is their moderate acceptance of eHealth.³² There is ample evidence that acceptance is an important prerequisite for implementing new technologies into practice.^{33 34} Across studies, an important factor influencing acceptance (respective the intention to apply new technology) is performance expectancy.^{32 35–38}

To increase acceptance, acceptance-enhancing video interventions have proven to be effective in patients and health practitioners.^{33 39 40} However, not all studies were able to increase practitioners' acceptance,^{41 42} suggesting that the presentation and content of educational videos are relevant.³³

Since previous research mainly investigated eHealth in general focusing on internet interventions, little is known about the acceptance of mobile health apps. The main aims of this study were to assess physicians' acceptance of health apps and to increase their acceptance, performance expectancy and credibility via a short video intervention. Our further aim was to identify variables that influence physicians' acceptance of health apps for chronic pain. To the best of our knowledge, this is the first experimental study assessing and modifying physicians' acceptance of health apps in the context of chronic pain.

METHODS

Study design

This study is a web-based experimental trial with a parallel-group design using simple randomisation procedure (1:1 allocation ratio). Self-rating questionnaires were used to assess preintervention and postintervention outcomes.

Completing the survey took an average of 14min. Measurements were collected online via the software platform Unipark (Enterprise Feedback Suite survey, version Fall 2020, Questback). Randomisation was performed within the Unipark software. All procedures complied with the German Psychological Society's ethical guidelines.

Participants

Data collection was performed between December 2020 and April 2021. The sample size was determined using an a priori power analysis with G*Power V.3.1.9.3.⁴³ Following a similar preceding study,³³ we based our calculations on a small effect between groups (expected $f=0.16$; power=0.8; alpha error probability of 0.05), resulting in a necessary

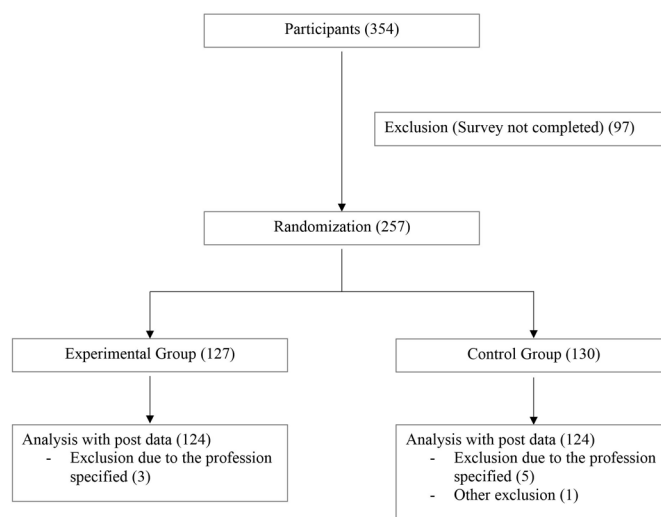


Figure 1 Flow chart.

sample size of 230. Because we assumed a 10% drop-out rate, we planned to survey 253 subjects. We recruited physicians via email distribution lists, physician networks and emails to practices. Due to the different recruitment methods, we can only estimate the number of physicians contacted. We assume that we reached approximately 10 000 physicians, of whom 354 started the survey. The response rate is comparable to a similar study.³³ A total of 257 participants completed the questionnaires at postintervention, yielding a completer rate of 73% (figure 1). Inclusion criteria were being employed as a physician and sufficient knowledge of the German language. Study participants were collected online through practices, hospitals and medical communities. In addition, we recruited a sample of 101 medical students via Facebook groups for medical students as well as email distribution lists of medical schools.

Measures

Primary outcome

Acceptance of the Unified Theory of Acceptance and Use of Technology model (UTAUT)³⁴ was our primary outcome. Acceptance according to the UTAUT model is conceived as the intention to use (new) technologies. The three acceptance items (table 1) were added together as a cumulative score, giving a range of 3–15. To make our data easier to interpret, we considered values as low (3–6), moderate (7–11) and high (12–15). This classification is similar to other studies.^{32 33} Cronbach's alpha was 0.93.

Secondary outcomes

Performance expectancy of the UTAUT model was our secondary outcome. It was surveyed by means of 3 items (table 1). Performance expectancy is conceptualised as the expectation that an intervention will be beneficial.

An additional secondary outcome was the credibility of health apps, which we assessed via the Credibility/Expectancy Questionnaire (CEQ).⁴⁴ The credibility scale (eg, 'How logical does the medical use of health apps for chronic pain seem to you?'), includes three items and

Table 1 UTAUT items

UTAUT scale	Items
Acceptance	1. I can basically imagine prescribing a health app. 2. I would prescribe health apps regularly. 3. I would recommend health apps to colleagues.
Performance expectancy	1. Using health apps would improve the effectiveness of my work. 2. Using health apps would help me in my work and increase my productivity. 3. Overall, health apps would help me treat my patients.
Effort expectancy	1. Using health apps would be easy. 2. Using health apps would be easy for me. 3. The use of health apps would be clear and understandable to me.
Social influence	1. Colleagues would advise me to use health apps. 2. My supervisors and/or experienced colleagues would recommend that I use health apps.
Facilitating conditions	1. I would get support for technical problems with health apps. 2. I have the necessary technical skills to use health apps.

Notes. Items are adapted from refs [39](#) [45](#) [46](#).
 UTAUT, Unified Theory of Acceptance and Use of Technology.

asks about treatment credibility on a 9-point response scale (ranging from 1=not at all useful to 9=very useful). Cronbach's alpha for the credibility scale was 0.91.

Primary and secondary outcomes were measured both before and after the intervention. With our cohort of medical students, only the primary and secondary outcomes were assessed, but not the predictors of acceptance.

Predictors of acceptance

Predictors of acceptance were examined. For this purpose, we used the baseline variable of acceptance as dependent variable and multiple predictors as independent variables (see the Statistical analysis section).

Sociodemographic variables included age, gender, daily smartphone time and smartphone use in a professional context. All of the following items had to be slightly adapted for the purpose of this study.

We assessed the four main constructs of UTAUT model.³⁴ The UTAUT model is an established model which states that the four constructs performance expectancy (Cronbach's alpha of 0.94); effort expectancy (Cronbach's alpha of 0.84); facilitating conditions (Spearman's correlation of 0.17) and social influence (Spearman's correlation of 0.79) have an effect on the acceptance and intention to use (new) technologies. The scales consist of statements ([table 1](#)) that can be agreed to on a 5-point response scale (answers ranging from 1=totally disagree to 5=totally agree). Higher values indicate a higher level of the construct. Items were adapted from different studies.^{39 45 46}

From the Attitudes towards Psychological Online Interventions questionnaire (APOI),⁴⁷ we used the scepticism and perception of risks scale, which contains four statements (eg, 'It is difficult for patients to effectively integrate health apps into their daily lives.') that can be agreed on

a 5-point scale (ranging from 1=totally agree to 5=totally disagree). We excluded one item because its content did not fit the survey ('By using a POI (Psychological Online Interventions), I do not receive professional support.'). Cronbach's alpha for this scale was 0.57.

Openness (eg, 'I would use new treatments to help my patients.') and intuitive appeal (eg, 'If you learned about a new health app, how likely would you be to use it if it appealed to you intuitively?') were assessed with the Evidence-based Practice Attitude Scale-36 (EBPAS).⁴⁸ The EBPAS measures difficulties and supportive factors in implementing evidence-based treatment approaches. Both scales consist of four statements or questions that can be agreed to on a 5-point response scale (ranging from 0=not at all to 4=to a very great extent). Cronbach's alpha of 0.84 (openness) and 0.87 (intuitive appeal).

Before starting the survey, we gave participants a brief definition of health apps and instructed them that all questions are related to health apps for chronic pain patients.

Intervention

The control group (CG) watched a video (3:10 min) providing general information about chronic pain (eg, prevalence and costs for the healthcare system and psychosocial consequences for people suffering from chronic pain). The experimental group (EG,) watched a video (3:23 min) that discussed the content of health apps (eg, how they can be used and the results of recent studies). We kept the information of both videos in simple language. In terms of content, the videos only gave a general overview of the topic without going into too much detail. Both videos were matched in terms of visuals ([figure 2](#)). Skipping the video was not possible due to the survey software. We produced the video with the commercial software Powtoon (2012–2021 Powtoon). A professional narrator recorded the audio track. An

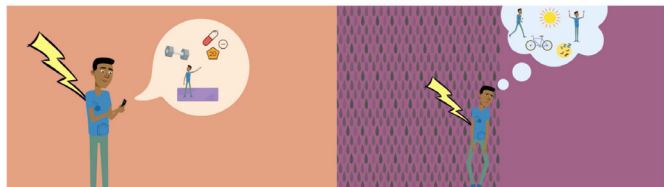


Figure 2 Screenshots of the video interventions. Left: Video of the EG describing possible applications of pain apps; Right: Video of the CG describing psychosocial consequences of chronic pain. CG, control group; EG, experimental group.

English translation of the spoken text is in online supplemental material.

Statistical analysis

We used the V.26 of IBM SPSS Statistics software for statistical analyses. There were no missing data due to the software (participants had to answer all questions to get to the next page). For all analyses, we used a type-1 error level of 5%.

Both Mahalanobis distance and Cook's distance were used to detect multivariate outliers.⁴⁹ According to the suggestion of Pituch and Stevens, univariate outliers were calculated using standardised values.⁴⁹ We checked data for plausibility before exclusion. In addition, we checked subjects' comments at the end of the survey for possible bias.

To detect any differences between baseline values, we conducted a multivariate analysis of variance for age; APOI; EBPAS; CEQ; and the UTAUT variables. We assessed gender differences using a χ^2 test.

The video's influence on our primary and secondary outcomes was assessed via a 2 (condition) \times 2 (time) repeated measures analysis of variance. Partial eta squared was used as the effect size measure, as suggested by Richardson. Effect sizes were classified according to Richardson⁵⁰ based on Cohen.⁵¹ To reduce inflation of the alpha error, we applied Bonferroni correction to secondary outcomes.⁵²

The variables influencing health apps' acceptance were calculated using linear regression, in which we added predictor groups blockwise: first, demographic variables (age; gender; daily smartphone time; smartphone use in a working context). The APOI, EBPAS and CEQ scales were then added. Last, the four UTAUT predictors were added to the model. Acceptance from the premeasurement was the dependent variable.³² Because of the large number of predictors and resulting overestimation of R^2 , we referred to an adjusted R^2 as the outcome.⁵³

Patient and public involvement

No patient involved.

RESULTS

Sample characteristics

After inspecting the data, there was one exclusion because the subject stated that he had filled in the questionnaires

arbitrarily. Eight subjects were excluded because they had stated 'psychological psychotherapist' as their specialist direction, which in Germany indicates that they were not physicians but psychologists. This reduced our sample to 248 (38.71% female) ($n_{EG}=124$; $n_{CG}=124$). The average age was 49.56 years ($SD=11.51$). There were no baseline differences between conditions. The most common fields of specialisation were general practitioners (89); surgeons (39); anesthesiologists (29); neurologists and psychiatrists (23). Acceptance levels at baseline across both conditions were moderate ($M=9.51$, $SD=3.53$) with 21.4% in the low range, 47.1% in the moderate range, and 31.5% in the high range. See table 2 for a complete list of specialty directions, additional demographic variables as well as prevalues of the baseline measures.

Primary outcome

Our subjects' acceptance was increased by means of the video (significant main effect of time ($F(1, 246)=15.28$, $p<0.001$, $\eta^2_p=.06$)). Further subjects of the EG showed higher increases than those of the CG (significant time \times condition interaction ($F(1, 246)=15.28$, $p=0.01$, $\eta^2_p=.02$)). After the intervention, the EG ($M=10.51$, $SD=3.28$) had higher postacceptance scores than the CG ($M=9.48$, $SD=3.57$) ($t(246)=-2.37$, $p=0.01$). Group comparison of postassessment data revealed a small effect (Cohen's $d=0.30$). Figure 3 shows a comparison between the medical student sample and the physicians.

Secondary outcomes

Performance expectancy could also be increased by the video (main effect of time ($F(1, 246)=66.85$, $p<0.001$, $\eta^2_p=0.21$)). Again, the increase was higher in the EG than in the CG (significant time \times condition interaction ($F(1, 246)=6.10$, $p=0.01$, $\eta^2_p=0.02$)). The EG ($M=9.94$, $SD=3.16$) had higher post-performance expectancy scores than the CG ($M=9.02$, $SD=3.34$) ($t(246)=-2.23$, $p=0.01$). Again, group comparison of the post-assessment data revealed a small effect (Cohen's $d=0.28$).

We found the same pattern of results for credibility. It was increased by the video (significant effect of time ($F(1, 246)=64.47$, $p<0.001$, $\eta^2_p=0.21$)), with a higher increase in the EG (significant time \times condition interaction ($F(1, 246)=25.61$, $p<0.001$, $\eta^2_p=0.09$)). Postvalues of the EG ($M=6.07$, $SD=1.87$) were higher than those of the CG ($M=5.31$, $SD=2.14$) ($t(246)=-2.95$, $p=0.002$). Postassessment group comparison revealed a small to moderate effect for credibility (Cohen's $d=0.38$). Figure 4 shows a comparison between the medical student sample and the physicians in terms of credibility.

The medical students' pattern of results was identical to those illustrated above (see online supplemental material for a detailed presentation of results and demographic variables). The time \times condition interaction effect for acceptance had an effect size of $\eta^2_p=0.13$ (figure 2); for performance expectancy an effect size of $\eta^2_p=0.09$; and for credibility an effect size of $\eta^2_p=0.21$ (figure 3).

Table 2 Demographic characteristics

Variables	Experimental group	Control group
Age	49.65±11.57	49.47±11.49
No (% female)	124 (35.50)	124 (41.90)
Professional environment (%)		
Outpatient	89 (71.8)	77 (62.1)
Inpatient	30 (24.2)	33 (26.6)
Other	5 (4.0)	14 (11.3)
Medical specialty (%)*		
General medicine	49 (39.5)	40 (32.3)
Surgery	17 (13.7)	22 (17.7)
Neurology	17 (13.7)	6 (4.8)
Anaesthesiology	11 (8.9)	18 (14.5)
Orthopaedics	6 (4.8)	8 (6.5)
Paediatrics	5 (4)	8 (6.5)
Other	19 (15.4)	22 (17.7)
CEQ		
Credibility	5.28±1.78	5.14±1.96
APOI		
Scepticism and perception of risks	2.66±0.74	2.68±0.81
EBPAS		
Openness	3.65±0.87	3.66±0.93
Intuitive appeal	3.64±0.88	3.57±0.93
UTAUT		
Acceptance	9.73±3.33	9.30±3.72
Performance expectancy	8.60±3.00	8.30±3.10
Effort expectancy	11.03±2.47	10.73±2.42
Social influence	5.80±2.10	5.40±1.95
Facilitating conditions	7.60±1.71	7.48±1.95

Notes. Values represent averages (±SD), frequency or percentages. *Only those medical specialties are listed that were represented by more than 5% in one of the two groups. APOI, Attitudes towards Psychological Online Interventions; CEQ, Credibility/Expectancy Questionnaire; EBPAS, Evidence-based Practice Attitude Scale-36; UTAUT, Unified Theory of Acceptance and Use of Technology.

Predictors of acceptance

Linear regression with the predictors from the first block was significant ($R^2_{adj}=0.14$, $F(4, 242)=11.01$, $p<0.001$). Age ($\beta=-0.23$, $p=0.001$) and smartphone use in a professional context ($\beta=0.20$, $p=0.002$) were related to acceptance.

The model improved when we added the second block with APOI, EBPAS as well as CEQ scales ($R^2_{adj}=0.70$, $F(8, 238)=72.35$, $p<0.001$). Credibility ($\beta=0.51$, $p<0.001$) was the strongest predictor followed by scepticism ($\beta=-0.24$,

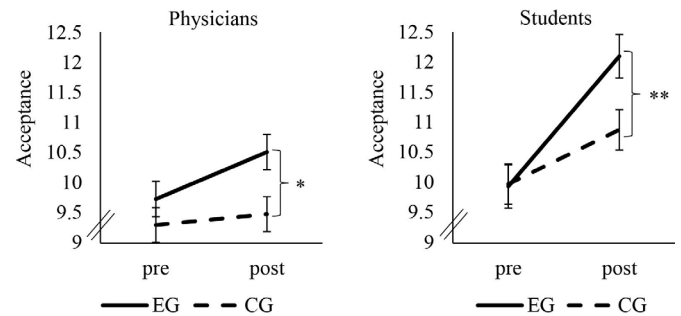


Figure 3 Change in acceptance. Error bars indicate SEs. * $P<0.05$; ** $P<0.005$. CG, control group; EG, experimental group; pre, measurement before the video; post, measurement after the video.

$p<0.001$) and intuitive appeal ($\beta=0.13$, $p=0.01$). None of the predictors from the first block were significant.

The model improved marginally after adding the UTAUT variables ($R^2_{adj}=0.73$, $F(12, 234)=56.24$, $p<0.001$). Again, credibility was the best predictor ($\beta=0.34$, $p<0.001$), followed by performance expectancy ($\beta=0.30$, $p<0.001$), scepticism ($\beta=-0.18$, $p<0.001$) and intuitive appeal ($\beta=0.11$, $p=0.03$). None of the other predictors were significant. A table with all predictors is provided in online supplemental material.

DISCUSSION

This study is the first to explicitly investigate physicians' acceptance of health apps focusing on chronic pain. Our results complement preceding studies by adding the physicians' perspective within an outpatient setting. The main aims of this study were to survey physicians' current acceptance of health apps for patients with chronic pain and to increase their acceptance. In general, physicians' and medical students' acceptance for health apps was moderate, which indicates a higher openness than previous studies.³² The experimental intervention successfully increased acceptance, performance expectancy and credibility of health apps among physicians and medical students. Our additional study aim was to identify variables that influence acceptance. Credibility and

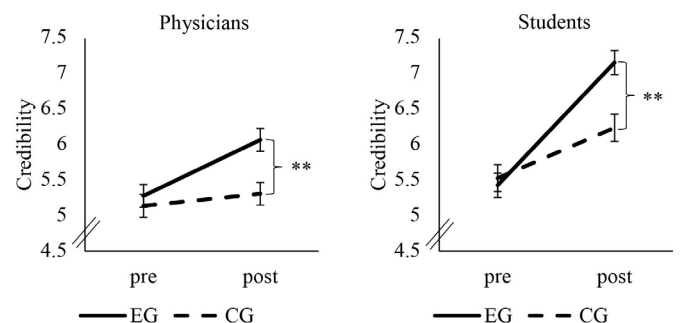


Figure 4 Change in credibility. Error bars indicate SEs. ** $P<0.01$. CG, control group; EG, experimental group; pre, measurement before the video; post, measurement after the video.



performance expectancy were the strongest predictors of acceptance, followed by scepticism and intuitive appeal.

We found that our physicians' moderate acceptance of health apps was higher than that reported in previous studies: A survey conducted between 2015 and 2016 among various healthcare professionals observed rather low acceptance rates for electronic health interventions.³² According to a recent study, psychotherapists exhibited mixed acceptance of blended care (a combination of internet and mobile based interventions and face-to-face therapy).³³ However, the aforementioned study was conducted several years ago and perceptions of eHealth may have changed in the meantime. In particular, the COVID-19 pandemic may have influenced opinions about electronic health interventions.⁵⁴ Also, unlike the studies mentioned above, we specifically asked about health apps in our survey.

Our results indicate that brief, visually appealing educational videos may be an effective acceptance-facilitating intervention for physicians. Results from acceptance-enhancing interventions in other studies were inconclusive. Some researchers demonstrated positive effects,³³ while others identified no effects.^{41 42} Most researchers employed video interventions to increase acceptance toward eHealth interventions in general (eg, online interventions) but not by focusing on apps in particular. Another potential explanation of our positive findings is the specific focus on chronic pain, as the perceived usefulness of eHealth and mHealth interventions could be disorder-specific.

However, the higher effect sizes of the student sample lead us to cautiously conclude that the intervention may be more effective with students. Although young age does not automatically lead to higher digital health competencies,⁵⁵ young professionals appear to be more receptive to interventions that promote the acceptance of health apps. This could be due to a generally higher familiarity of younger people in using smartphones and their preference for this medium for obtaining health information.⁵⁶ Since high acceptance does not automatically lead to action,⁵⁷ long-term studies examining the actual use of health apps among (prospective) physicians would be worthwhile.

The strong association we detected between performance expectancy and acceptance is in line with other research findings. Across studies, performance expectancy has consistently shown to be one of the most important predictors of acceptance of new technologies in the healthcare sector.^{32 37} This strong association between performance expectancy and acceptance suggests that physicians' acceptance can be increased by highlighting the benefits of health apps for their patients and themselves. This is also supported by a study which found that physicians are more likely to use mobile devices with drug reference software if they believe it will help their patients.⁵⁸ In contrast to Hennemann *et al*,³² we found no impact of social influence on acceptance, nor did we find any influence of facilitating conditions as

Liu *et al* colleagues did.³⁷ Note that the subjects in those two studies were surveyed in inpatient settings. We mainly surveyed physicians in an outpatient setting. Accordingly, our physicians were probably relying less on their employer's facilitation because they are often self-employed. The same might apply to social support: Medical practices employ much less staff than hospitals, a fact that may have contributed to this construct being less significant in this survey. Additionally, it is worth mentioning that the two studies above did not specifically survey acceptance towards health apps and that they were conducted a few years ago. The relevance of certain constructs like facilitating conditions may have lessened since then.

The association we found between credibility and acceptance also concurs with previous research findings. A study with college students concluded that credibility influences the perceptions of health apps positively.⁵⁹ The credibility of new technologies in the healthcare field is important⁶⁰ as it increases the likelihood that the technology will be used in the short term and long term.^{61 62} Accordingly, the low prescription rates (or the paucity of recommendations) of health apps by physicians could be partly attributable to their lack of credibility. One potential reason for this is the low quality of many health apps on the market.⁶³ Important to the credibility of information about new electronic health measures is the source of the information. Websites controlled by editors are perceived to be more credible, as is information from independent medical experts.⁶⁴ Because the source of the material appears to be more important than its design,⁶⁵ independent research institutes can play an important role in disseminating evidence-based information about electronic healthcare interventions. By including highly visible videos on their websites, they could increase both the acceptance and awareness of health apps. Our results indicate that such an approach holds particular promise for medical students, highlighting the call for establishing eHealth curricula in education.^{60 66}

Technological influences will continue to make strong inroads into medicine,⁶⁷ which requires that healthcare professionals are able to adapt new technologies flexibly. Especially considering the rapid technological progress in this area, the evidence from earlier studies and from ours provide valuable information about the importance of communicating with physicians, psychotherapists and other professional groups in the healthcare sector about eHealth in general and health apps in particular. Video interventions can be an effective and cost-saving method of communicating the potential, opportunities and limitations of these new technologies. They reach the target group at a low threshold, for example, by being included on informational websites, newsletters or at training courses. This informational material should emphasise both performance expectancy and the credibility of the intervention being addressed.

In addition to increasing acceptance of health apps, it is also important to provide physicians with specific recommendations on which apps are best to use for which

patients. Due to the volume of the still growing market, it is hardly possible for individuals to get a comprehensive overview of the range of health apps available. It, therefore, seems sensible to establish guidelines for physicians on which apps can be helpful for which problems—just as there are guidelines for medications for diseases. To achieve this, a recent study suggests specific recommendations from medical associations or scientific societies, as well as special training in this area.⁶⁸ This could help physicians integrate health apps into their workflows.⁶⁹

Limitations

Our study has some limitations. First, due to our broad definition of pain apps, participants may have assumed different usage scenarios for health apps. This could have influenced their acceptance. Accordingly, future studies could investigate attitudes toward specific apps, for example, psychological intervention apps. There may have been a selection bias due to the data collection method. Thus, physicians who were already open and interested in mHealth may have participated, which would restrict the generalisability of our results. Furthermore, our results relied solely on self-reporting. Most of our items were adaptations of already tested items or scales on questionnaires. This approach was necessary due to the lack of appropriate health app-specific questionnaires, but it remains a limitation. In addition, the scale facilitating conditions had low correlation measures, accordingly results of this scale should be interpreted with caution. Because of the survey's brevity, we could not collect many other potentially relevant constructs like technologisation threat⁴⁷ or previous experience with health apps. As acceptance due to self-regulatory deficits⁷⁰ does not guarantee that intention becomes an action in the future,⁵⁷ longitudinal surveys to examine whether video interventions increase the actual recommendations or prescriptions of the respective technologies should be one of the next steps in research.

Strengths

To our knowledge, this is the first study that investigated and increased physicians' acceptance of health apps for managing chronic pain. This professional group is of particular interest due to the gatekeeper role they play in the healthcare system. Furthermore, we based the UTAUT questionnaires on predecessor studies, to increase comparability. In addition, we engaged a strong CG whose intervention was timed, visually and audibly matched to the intervention video. Despite the brevity of the survey and our strong CG, we identified a superior effect of the intervention video. The video intervention was very short and can be integrated at a low-threshold within different platforms.

Conclusion

Our results show that physicians are open to using health apps for chronic pain patients as they demonstrated moderate to high acceptance rates. Our study also shows

that performance expectancy and credibility had the strongest influence on acceptance. As low-threshold entities, brief video interventions are useful tools that can strengthen these constructs and reach a high number of health professionals. They can thus be helpful in overcoming certain barriers to implementing mobile health interventions in clinical practice. Future studies should examine the long-term effect of acceptance facilitating interventions and their impact on behavioural measures.

Acknowledgements We would like to thank Nora Jander for her excellent voice-over on the video and Benno Glöckler and Kari Fuhrmann for their support in recruiting the physicians.

Contributors HJH, JAG, WR and JR: Conception and design of the study; HJH: data collection, analysis and interpretation, manuscript preparation; JAG, WR and JR: supervision, manuscript editing and reviewing; JR: project administration and guarantor. All authors approved the final manuscript.

Funding The authors have not declared a specific grant for this research from any funding agency in the public, commercial or not-for-profit sectors.

Competing interests None declared.

Patient and public involvement Patients and/or the public were not involved in the design, or conduct, or reporting, or dissemination plans of this research.

Patient consent for publication Not applicable.

Ethics approval This study involves human participants and was approved by Ethics Committee of the Philipps University of Marburg, reference number: 2020-72k-2.

Provenance and peer review Not commissioned; externally peer reviewed.

Data availability statement Data are available on reasonable request. A request can be made to the corresponding author.

Supplemental material This content has been supplied by the author(s). It has not been vetted by BMJ Publishing Group Limited (BMJ) and may not have been peer-reviewed. Any opinions or recommendations discussed are solely those of the author(s) and are not endorsed by BMJ. BMJ disclaims all liability and responsibility arising from any reliance placed on the content. Where the content includes any translated material, BMJ does not warrant the accuracy and reliability of the translations (including but not limited to local regulations, clinical guidelines, terminology, drug names and drug dosages), and is not responsible for any error and/or omissions arising from translation and adaptation or otherwise.

Open access This is an open access article distributed in accordance with the Creative Commons Attribution Non Commercial (CC BY-NC 4.0) license, which permits others to distribute, remix, adapt, build upon this work non-commercially, and license their derivative works on different terms, provided the original work is properly cited, appropriate credit is given, any changes made indicated, and the use is non-commercial. See: <http://creativecommons.org/licenses/by-nc/4.0/>.

ORCID iD

Hauke Jeldrik Hein <http://orcid.org/0000-0002-9606-146X>

REFERENCES

- 1 GBD 2015 Disease and Injury Incidence and Prevalence Collaborators. Global, regional, and national incidence, prevalence, and years lived with disability for 310 diseases and injuries, 1990–2015: a systematic analysis for the global burden of disease study 2015. *Lancet* 2016;388:1545–602.
- 2 Graham JE, Streitel KL. Sleep quality and acute pain severity among young adults with and without chronic pain: the role of biobehavioral factors. *J Behav Med* 2010;33:335–45.
- 3 Ratcliffe GE, Enns MW, Belik S-L, et al. Chronic pain conditions and suicidal ideation and suicide attempts: an epidemiologic perspective. *Clin J Pain* 2008;24:204–10.
- 4 Ryan S, Hill J, Thwaites C, et al. Assessing the effect of fibromyalgia on patients' sexual activity. *Nurs Stand* 2008;23:35–41.
- 5 Veehof MM, Trompetter HR, Bohlmeijer ET, et al. Acceptance- and mindfulness-based interventions for the treatment of chronic pain: a meta-analytic review. *Cogn Behav Ther* 2016;45:5–31.

- 6 Glombiewski JA, Holzappel S, Riecke J, et al. Exposure and CBT for chronic back pain: an RCT on differential efficacy and optimal length of treatment. *J Consult Clin Psychol* 2018;86:533–45.
- 7 Williams AC de C, Fisher E, Hearn L, et al. Psychological therapies for the management of chronic pain (excluding headache) in adults. *Cochrane Database Syst Rev* 2021;2020.
- 8 Morley S. Relapse prevention: still neglected after all these years. *Pain* 2008;134:239–40.
- 9 Gaskin DJ, Richard P. The economic costs of pain in the United States. *J Pain* 2012;13:715–24.
- 10 Leadley RM, Armstrong N, Lee YC, et al. Chronic diseases in the European Union: the prevalence and health cost implications of chronic pain. *J Pain Palliat Care Pharmacother* 2012;26:310–25.
- 11 Landmark T, Romundstad P, Dale O, et al. Chronic pain: one year prevalence and associated characteristics (the HUNT pain study). *Scand J Pain* 2013;4:182–7.
- 12 Patel S, Greasley K, Watson PJ. Barriers to rehabilitation and return to work for unemployed chronic pain patients: a qualitative study. *Eur J Pain* 2007;11:831–40.
- 13 Turner JA. Pain and disability. Clinical, behavioral, and public policy perspectives (Institute of Medicine Committee on pain, disability, and chronic illness behavior). *Pain* 1988;32:385–6.
- 14 Austrian JS, Kerns RD, Reid MC. Perceived barriers to trying self-management approaches for chronic pain in older persons. *J Am Geriatr Soc* 2005;53:856–61.
- 15 Becker WC, Dorflinger L, Edmond SN, et al. Barriers and facilitators to use of non-pharmacological treatments in chronic pain. *BMC Fam Pract* 2017;18:41.
- 16 International Pain Summit Of The International Association For The Study Of Pain. Declaration of montréal: declaration that access to pain management is a fundamental human right. *J Pain Palliat Care Pharmacother* 2011;25:29–31.
- 17 Holmes EA, Ghaderi A, Harmer CJ, et al. The Lancet Psychiatry Commission on psychological treatments research in tomorrow's science. *Lancet Psychiatry* 2018;5:237–86.
- 18 Luxton DD, McCann RA, Bush NE, et al. mHealth for mental health: integrating smartphone technology in behavioral healthcare. *Prof Psychol Res Pract* 2011;42:505–12.
- 19 Demiris G, Afrin LB, Speedie S, et al. Patient-centered applications: use of information technology to promote disease management and wellness. A white paper by the AMIA knowledge in motion Working group. *J Am Med Informatics Assoc* 2008;15:8–13.
- 20 Alexander JC, Joshi GP. Smartphone applications for chronic pain management: a critical appraisal. *J Pain Res* 2016;9:731–4.
- 21 Chhabra HS, Sharma S, Verma S. Smartphone APP in self-management of chronic low back pain: a randomized controlled trial. *Eur Spine J* 2018;27:2862–74.
- 22 Toelle TR, Utpadel-Fischler DA, Haas K-K, et al. App-based multidisciplinary back pain treatment versus combined physiotherapy plus online education: a randomized controlled trial. *NPJ Digit Med* 2019;2:34.
- 23 Pfeifer A-C, Uddin R, Schröder-Pfeifer P, et al. Mobile Application-Based interventions for chronic pain patients: a systematic review and meta-analysis of effectiveness. *J Clin Med* 2020;9:3557.
- 24 Moman RN, Dvorkin J, Pollard EM, et al. A systematic review and meta-analysis of unguided electronic and mobile health technologies for chronic pain-Is it time to start prescribing electronic health applications? *Pain Med* 2019;20:2238–55.
- 25 Terhorst Y, Messner E-M, Schultchen D, et al. Systematic evaluation of content and quality of English and German pain apps in European APP stores. *Internet Interv* 2021;24:100376.
- 26 Cowan KE, McKean AJ, Gentry MT, et al. Barriers to use of telepsychiatry: clinicians as gatekeepers. *Mayo Clin Proc* 2019;94:2510–23.
- 27 Kayyali R, Peletidi A, Ismail M, et al. Awareness and use of mHealth Apps: a study from England. *Pharmacy* 2017;5:33.
- 28 Anastasiadou D, Folkvord F, Serrano-Troncoso E, et al. Mobile health adoption in mental health: user experience of a mobile health APP for patients with an eating disorder. *JMIR Mhealth Uhealth* 2019;7:e12920.
- 29 Parker SJ, Jessel S, Richardson JE, et al. Older adults are mobile too! Identifying the barriers and facilitators to older adults' use of mHealth for pain management. *BMC Geriatr* 2013;13:43.
- 30 Byambasuren O, Beller E, Glasziou P. Current knowledge and adoption of mobile health Apps among Australian general practitioners: survey study. *JMIR Mhealth Uhealth* 2019;7:e13199.
- 31 Ross EL, Jamison RN, Nicholls L, et al. Clinical integration of a smartphone APP for patients with chronic pain: retrospective analysis of predictors of benefits and patient engagement between clinic visits. *J Med Internet Res* 2020;22:e16939.
- 32 Hennemann S, Beutel ME, Zwerenz R. Ready for eHealth? Health professionals' acceptance and adoption of eHealth interventions in inpatient routine care. *J Health Commun* 2017;22:274–84.
- 33 Baumeister H, Terhorst Y, Grässle C, et al. Impact of an acceptance facilitating intervention on psychotherapists' acceptance of blended therapy. *PLoS One* 2020;15:e0236995.
- 34 Venkatesh V, Morris MG, Davis GB, et al. User acceptance of information technology: toward a unified view. *Mis Q* 2003;27:425.
- 35 Gagnon M-P, Ngangue P, Payne-Gagnon J, et al. m-Health adoption by healthcare professionals: a systematic review. *J Am Med Inform Assoc* 2016;23:212–20.
- 36 Lazuras L, Dokou A. Mental health professionals' acceptance of online counseling. *Technol Soc* 2016;44:10–14.
- 37 Liu L, Miguel Cruz A, Rios Rincon A, et al. What factors determine therapists' acceptance of new technologies for rehabilitation – a study using the unified theory of acceptance and use of technology (UTAUT). *Disabil Rehabil* 2015;37:447–55.
- 38 Sezgin E, Özkan-Yildirim S, Yildirim S. Investigation of physicians' awareness and use of mHealth apps: A mixed method study. *Health Policy Technol* 2017;6:251–67.
- 39 Baumeister H, Seifferth H, Lin J, et al. Impact of an acceptance facilitating intervention on patients' acceptance of Internet-based pain interventions: a randomized controlled trial. *Clin J Pain* 2015;31:528–35.
- 40 Lin J, Faust B, Ebert DD, et al. A web-based acceptance-facilitating intervention for identifying patients' acceptance, uptake, and adherence of internet- and mobile-based pain interventions: randomized controlled trial. *J Med Internet Res* 2018;20:e244.
- 41 Donovan CL, Poole C, Boyes N, et al. Australian mental health worker attitudes towards cCBT: what is the role of knowledge? Are there differences? Can we change them? *Internet Interv* 2015;2:372–81.
- 42 Schuster R, Pokorny R, Berger T, et al. The advantages and disadvantages of online and blended therapy: survey study amongst licensed psychotherapists in Austria. *J Med Internet Res* 2018;20:e11007.
- 43 Faul F, Erdfelder E, Lang A-G, et al. G*Power 3: a flexible statistical power analysis program for the social, behavioral, and biomedical sciences. *Behav Res Methods* 2007;39:175–91.
- 44 Devilly GJ, Borkovec TD. Psychometric properties of the credibility/expectancy questionnaire. *J Behav Ther Exp Psychiatry* 2000;31:73–86.
- 45 Baumeister H, Nowoczin L, Lin J, et al. Impact of an acceptance facilitating intervention on diabetes patients' acceptance of Internet-based interventions for depression: a randomized controlled trial. *Diabetes Res Clin Pract* 2014;105:30–9.
- 46 Ebert DD, Berking M, Cuijpers P, et al. Increasing the acceptance of internet-based mental health interventions in primary care patients with depressive symptoms. A randomized controlled trial. *J Affect Disord* 2015;176:9–17.
- 47 Schröder J, Sautier L, Kriston L, et al. Development of a questionnaire measuring attitudes towards psychological online Interventions-the APOI. *J Affect Disord* 2015;187:136–41.
- 48 Rye M, Torres EM, Friberg O, et al. The evidence-based practice attitude scale-36 (EBPAS-36): a brief and pragmatic measure of attitudes to evidence-based practice validated in US and Norwegian samples. *Implement Sci* 2017;12:1–11.
- 49 Pituch KA, Stevens JP. Applied multivariate statistics for the social sciences: analyses with SAS and IBM's SPSS 2016.
- 50 Richardson JTE. Eta squared and partial ETA squared as measures of effect size in educational research. *Educ Res Rev* 2011;6:135–47.
- 51 Cohen J. *Statistical power analysis for the behavioural sciences*. New York: Academic Press, 1969.
- 52 Armstrong RA. When to use the Bonferroni correction. *Ophthalmic Physiol Opt* 2014;34:502–8.
- 53 Miles J. R -squared, adjusted R -squared. *Encycl Stat Behav Sci* 2005;4:1655–7.
- 54 Wind TR, Rijkeboer M, Andersson G, et al. The COVID-19 pandemic: The 'black swan' for mental health care and a turning point for e-health. *Internet Interv* 2020;20:100317.
- 55 Machleid F, Kaczmarczyk R, Johann D, et al. Perceptions of digital health education among European medical students: mixed methods survey. *J Med Internet Res* 2020;22:e19827.
- 56 Granger D, Vandelanotte C, Duncan MJ, et al. Is preference for mHealth intervention delivery platform associated with delivery platform familiarity? *BMC Public Health* 2016;16:619.
- 57 Sheeran P, Webb TL. The intention-behavior gap. *Soc Personal Psychol Compass* 2016;10:503–18.
- 58 Handler SM, Boyce RD, Ligonis FM, et al. Use and perceived benefits of mobile devices by physicians in preventing adverse drug events in the nursing home. *J Am Med Dir Assoc* 2013;14:906–10.

- 59 Cho J, Lee HE, Quinlan M. Complementary relationships between traditional media and health apps among American college students. *J Am Coll Health* 2015;63:248–57.
- 60 van Gemert-Pijnen JEW, Wynchank S, Covvey HD, *et al*. Improving the credibility of electronic health technologies. *Bull World Health Organ* 2012;90:323.
- 61 Shin D-H, Lee S, Hwang Y. How do credibility and utility play in the user experience of health informatics services? *Comput Human Behav* 2017;67:292–302.
- 62 Lin J, Wang B, Wang N, *et al*. Understanding the evolution of consumer trust in mobile commerce: a longitudinal study. *Inf Technol Manag* 2014;15:37–49.
- 63 Reynoldson C, Stones C, Allsop M, *et al*. Assessing the quality and usability of smartphone apps for pain self-management. *Pain Med* 2014;15:898–909.
- 64 Hu Y, Shyam Sundar S. Effects of online health sources on credibility and behavioral intentions. *Communic Res* 2010;37:105–32.
- 65 Chang Y-S, Zhang Y, Gwizdka J. The effects of information source and eHealth literacy on consumer health information credibility evaluation behavior. *Comput Human Behav* 2021;115:106629.
- 66 Gordon WJ, Landman A, Zhang H, *et al*. Beyond validation: getting health apps into clinical practice. *NPJ Digit Med* 2020;3:14.
- 67 Seyhan AA, Carini C. Are innovation and new technologies in precision medicine paving a new era in patients centric care? *J Transl Med* 2019;17:114.
- 68 Jacob C, Sanchez-Vazquez A, Ivory C. Social, organizational, and technological factors impacting clinicians' adoption of mobile health tools: systematic literature review. *JMIR Mhealth Uhealth* 2020;8:e15935.
- 69 Dahlhausen F, Zinner M, Bieske L, *et al*. Physicians' attitudes toward prescribable mHealth apps and implications for adoption in Germany: mixed methods study. *JMIR Mhealth Uhealth* 2021;9:e33012.
- 70 Gollwitzer PM, Sheeran P. Implementation intentions and goal achievement: a meta-analysis of effects and processes. *Adv Exp Soc Psychol* 2006;38:69–119.