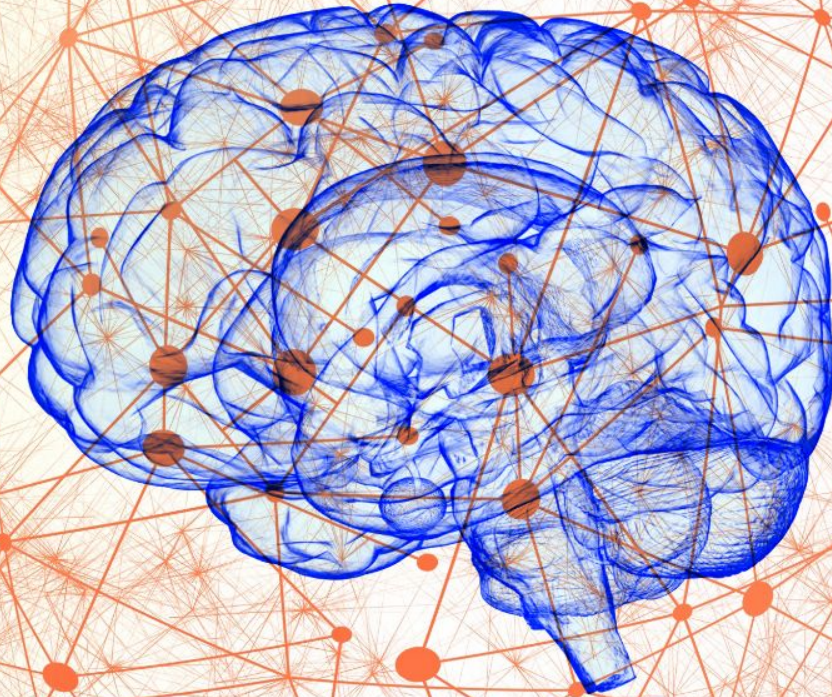


Brainhack 2022



Marburg



Open Data with OSF

Speaker: Lydia Riedl

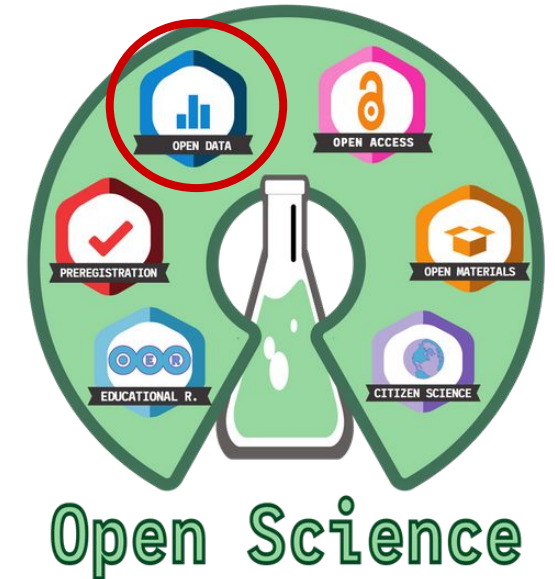
Contact: Riedl@staff.uni-marburg.de



Short recap...

If I want to publish my data...

1. How can I avoid a mix of my own data?
2. Where to start in the jungle of platforms?
3. How can I publish my data?



Open Universe, University of Salamanca

So let's start...





1. With your data

FAIR Data Principles

1. To be **F**indable.
2. To be **A**ccessible.
3. To be **I**nteroperable.
4. To be **R**e-usable.

@ <https://www.go-fair.org/fair-principles/>



1. With your data

DAY 2: Data management and organizing standards (Julia-Katharina Pfarr)

Research data management saves time and resources in the long run.
Try it out.

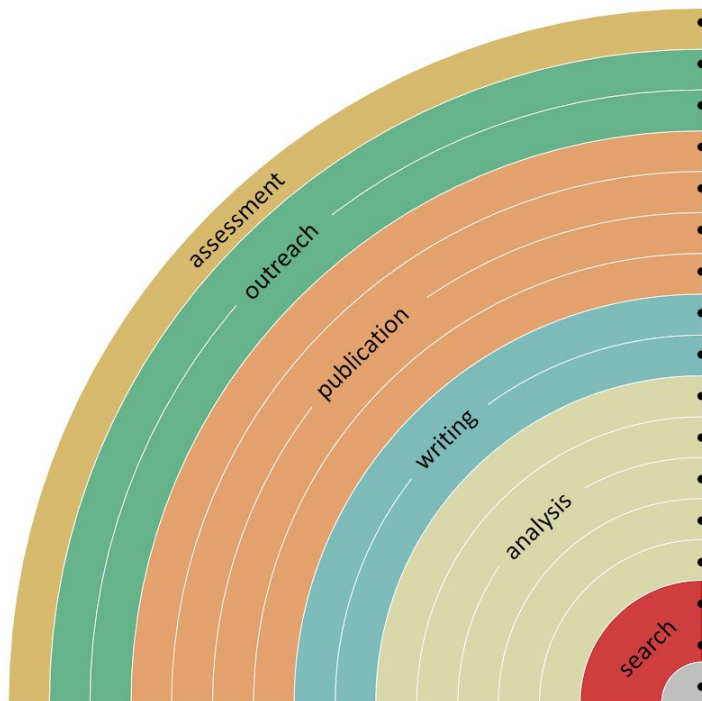


2. Where to start?

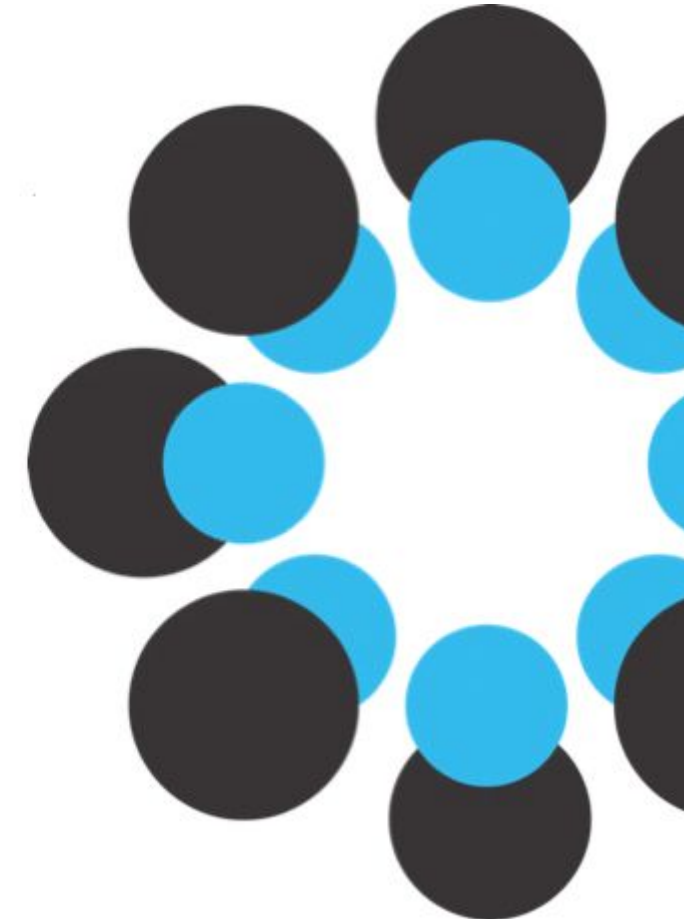


2. Where to start?

You can make your workflow more open by ...



- adding alternative evaluation, e.g. with altmetrics
- communicating through social media, e.g. Twitter
- sharing posters & presentations, e.g. at FigShare
- using open licenses, e.g. CC0 or CC-BY
- publishing open access, 'green' or 'gold'
- using open peer review, e.g. at journals or PubPeer
- sharing preprints, e.g. at OSF, arXiv or bioRxiv
- using actionable formats, e.g. with Jupyter or CoCalc
- open XML-drafting, e.g. at Overleaf or Authorea
- sharing protocols & workfl., e.g. at Protocols.io
- sharing notebooks, e.g. at OpenNotebookScience
- sharing code, e.g. at GitHub with GNU/MIT license
- sharing data, e.g. at Dryad, Zenodo or Dataverse
- pre-registering, e.g. at OSF or AsPredicted
- commenting openly, e.g. with Hypothes.is
- using shared reference libraries, e.g. with Zotero
- sharing (grant) proposals, e.g. at RIO





2. Where to start?

Click on the link...

<https://osf.io>



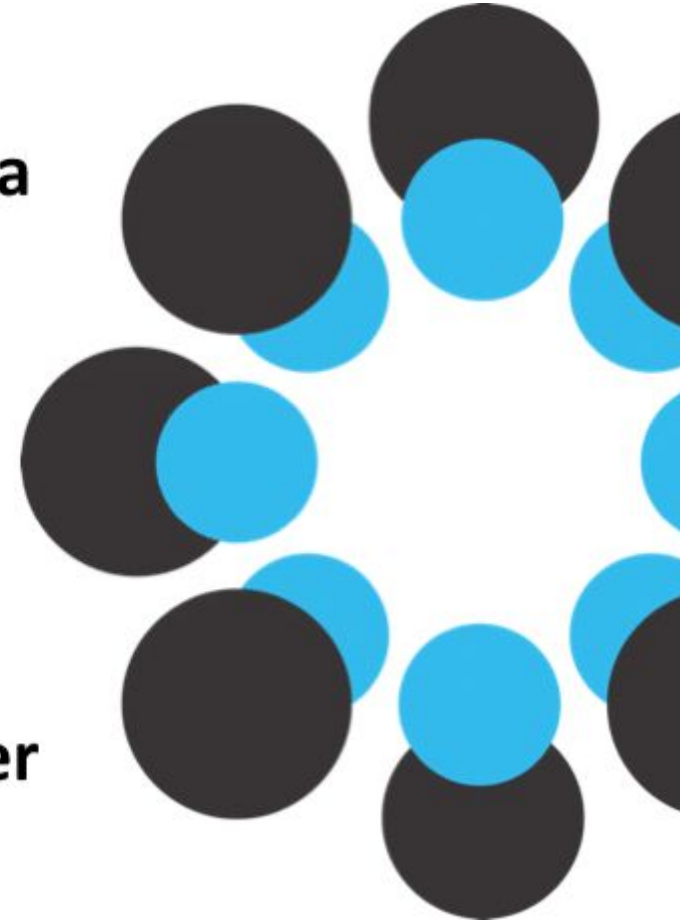
Share data



Collaborate



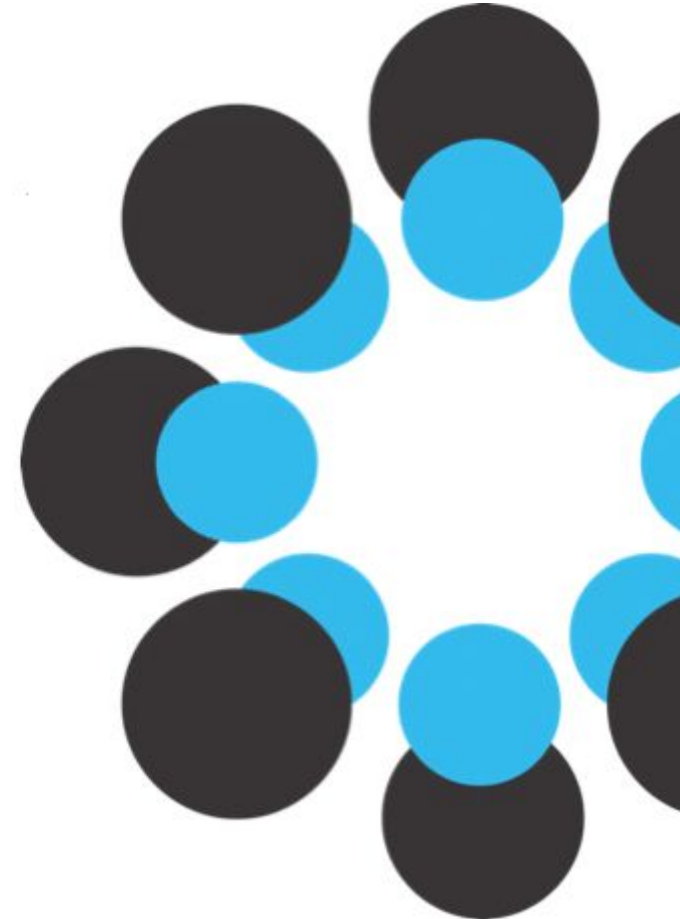
Preregister





The Open Science Framework

GETTING STARTED WITH THE
OPEN SCIENCE FRAMEWORK
(OSF)





Open Data with OSF

3. How to publish?



3. How to publish?



GIN



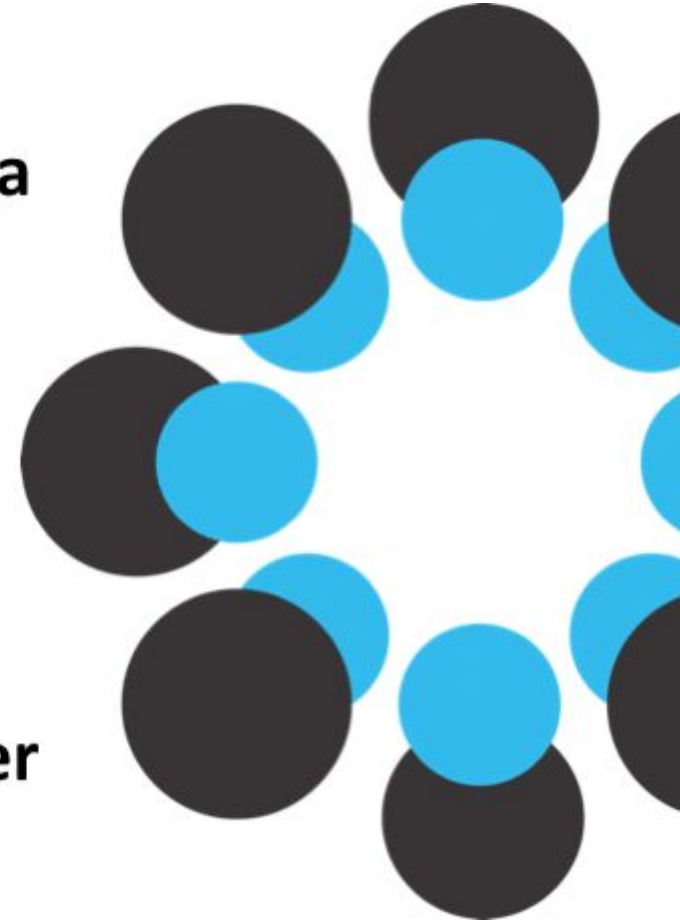
Share data



Collaborate



Preregister





3. How to publish?

re3data.org
REGISTRY OF RESEARCH DATA REPOSITORIES





3. How to publish?

A screenshot of the data_UMR website interface. At the top is a dark blue header with the Philipps-Universität Marburg logo on the left, and "DEUTSCH" and "LOGIN" on the right. Below the header is a light blue navigation bar with "Service Center E-Research" and "data_UMR | Research data repository". A secondary navigation bar contains icons for "Home", "Submit", "Discover", "Browse", and "About". The main content area is titled "data_UMR" and features a "Submit" section with instructions: "Your first submission? Please start by [creating a collection](#) !", "A suitable collection already exists? Start a submission!", and "For more information on the submission process please read our [guide \(PDF, German\)](#)". Below this is a "Search" section with a search input field containing the placeholder text "Enter a search term" and a blue arrow button to the right.




Finally: Am I alone?



photo from pixabay, public domain



Uni Marburg: eResearch center



Servicezentrum digital gestützte Forschung

MEHR ERFAHREN →

Themen

- Beratung & Schulung**
Unser Beratungs- und Schulungsangebot
- Unsere Angebote**
Auf diesen Seiten beschreiben wir die Werkzeuge, die wir Ihnen zur Verfügung stellen
- FAQ & Info**
Verteilenseite zu FAQ und anderen thematischen Informationsseiten des Servicezentrums digital gestützte Forschung
- Über**
Das Servicezentrum d... Forschung stellt sich...

Aktuelles

NACHRICHTEN

- 

15.11.2022
Brainhack Global Event in Marburg 2022 →
- 

12.10.2022
Workshop: Forschungsdaten in der Medienwissenschaft →
- 

12.09.2022
HeFDI Data School startet am 14.09.2022 mit einer Einführung ins Forschungsdatenmanagement →
- 

14.06.2022
"Tierisch gutes Datenmanagement" - Fortsetzung veröffentlicht